



Corporate Presentation



Touching 100 mn+ lives globally...

Welcome to our
Journey towards Excellence!



**We do not claim to be the best.
We only claim to be better than what we were yesterday.**



ABOUT US

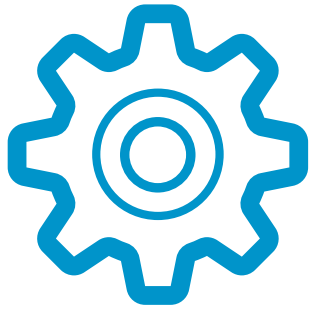


Welcome!

Encube Ethicals is an integrated pharmaceutical topical organization dedicated to only semisolid formulations.

We help our customers serve global markets with technology based, innovative, cost effective & consumer friendly topical products of the highest quality

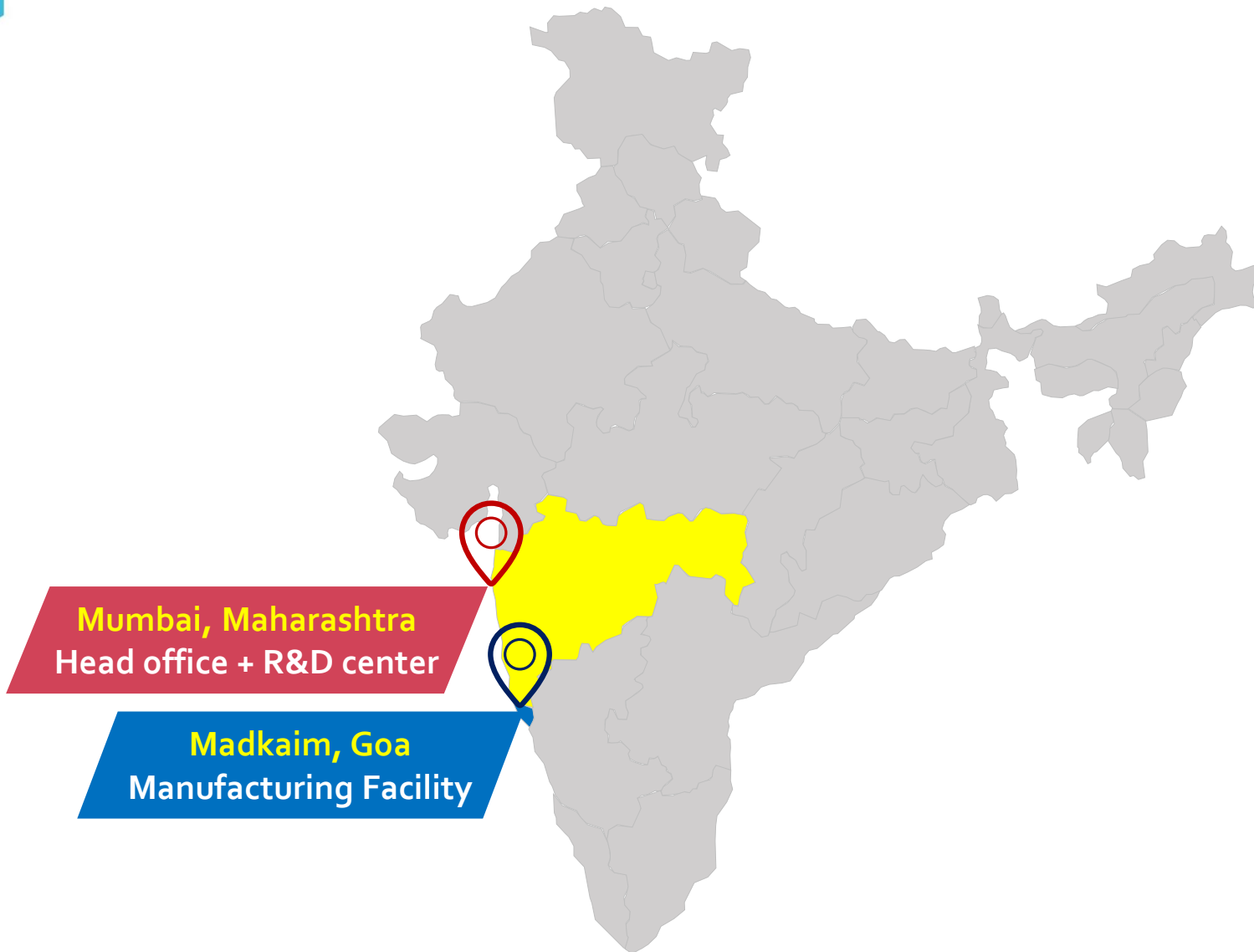




Our Core Competency?



We have chosen
Semi Solids.



Our Focus

**Excellence in
Semi-Solid
formulations.**

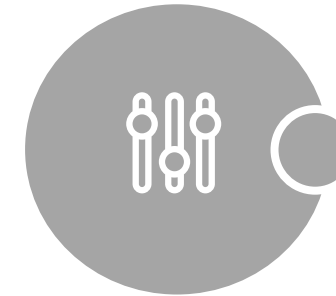


One of the Largest Single Site Manufacturing Facility for Pharmaceutical / OTC / Cosmetic Semisolid dosage forms in the world.

Initiation
March 1998



Land
56419 m²



Installed Capacity
300 mn units +
9000 tons +

Built-up Area
30588 m²



Cost of the Plant
40 mn USD +

60% of the business is Export Oriented with the major countries of export being US, UK, EU, Korea, Australia, Philippines, Malaysia, Canada, etc.

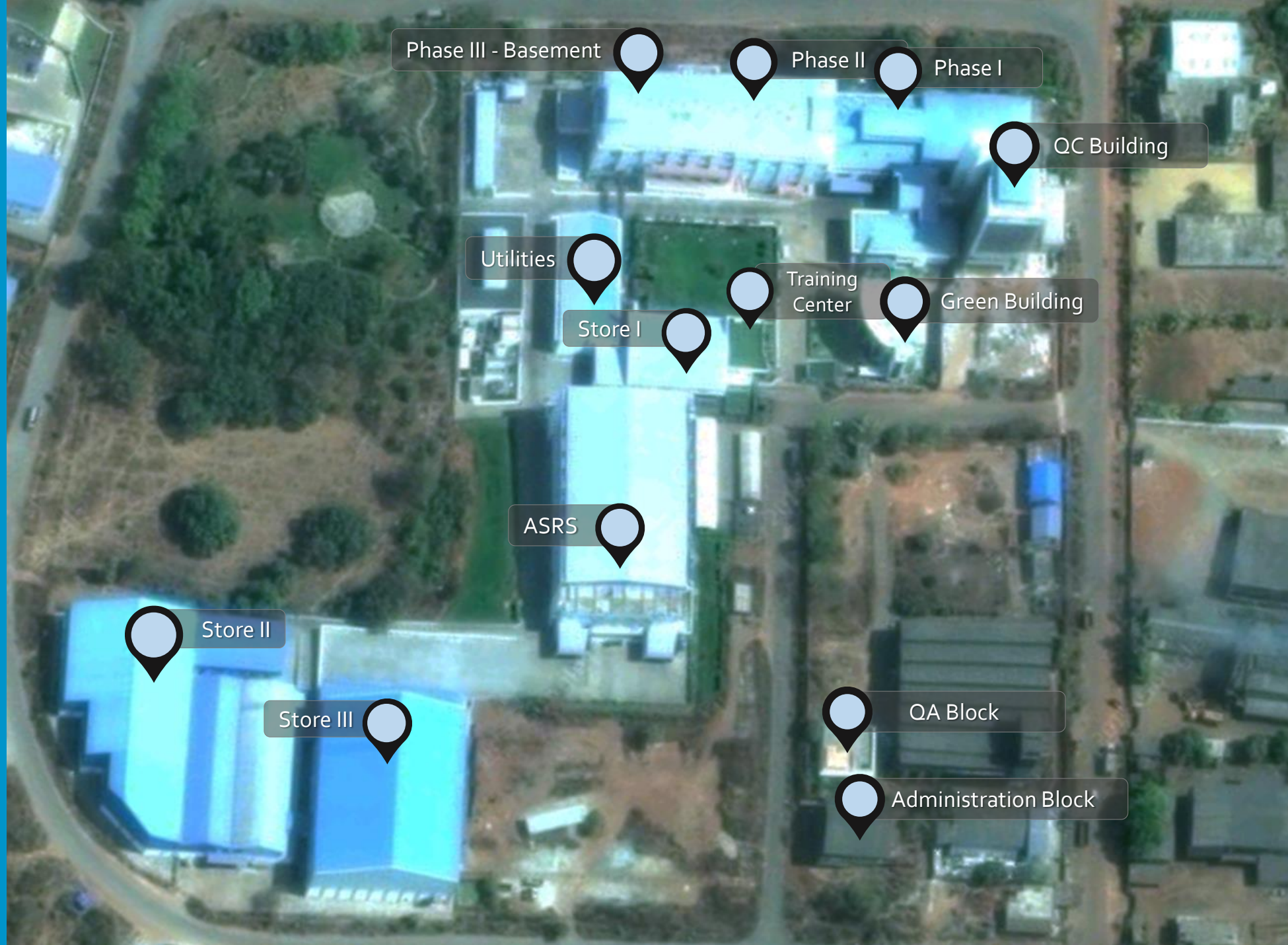


Brief Snapshot





Brief Snapshot



A large, solid blue circle centered on the slide. Inside the circle, the words "OUR TEAM" are written in a white, bold, sans-serif font, stacked vertically.

OUR TEAM



Mr. Mehul Shah
Founder & Managing Director

Mr. Mehul Shah is a Mumbai bred entrepreneur with more than 30 years of experience in the Pharmaceutical Industry.

He completed his Bachelor of Pharmacy from K. M. Kundnani College of Pharmacy - University of Mumbai in 1987.

His passion & expertise in Topical Semisolid Formulations has defined growth and strategy for Encube. His keen understanding of the manufacturing systems has made Encube into one of the most operationally flexible facility, capable of handling great variability & diversity.

He was awarded Emerging Entrepreneur of the Year at Indian Pharma Awards 2015.

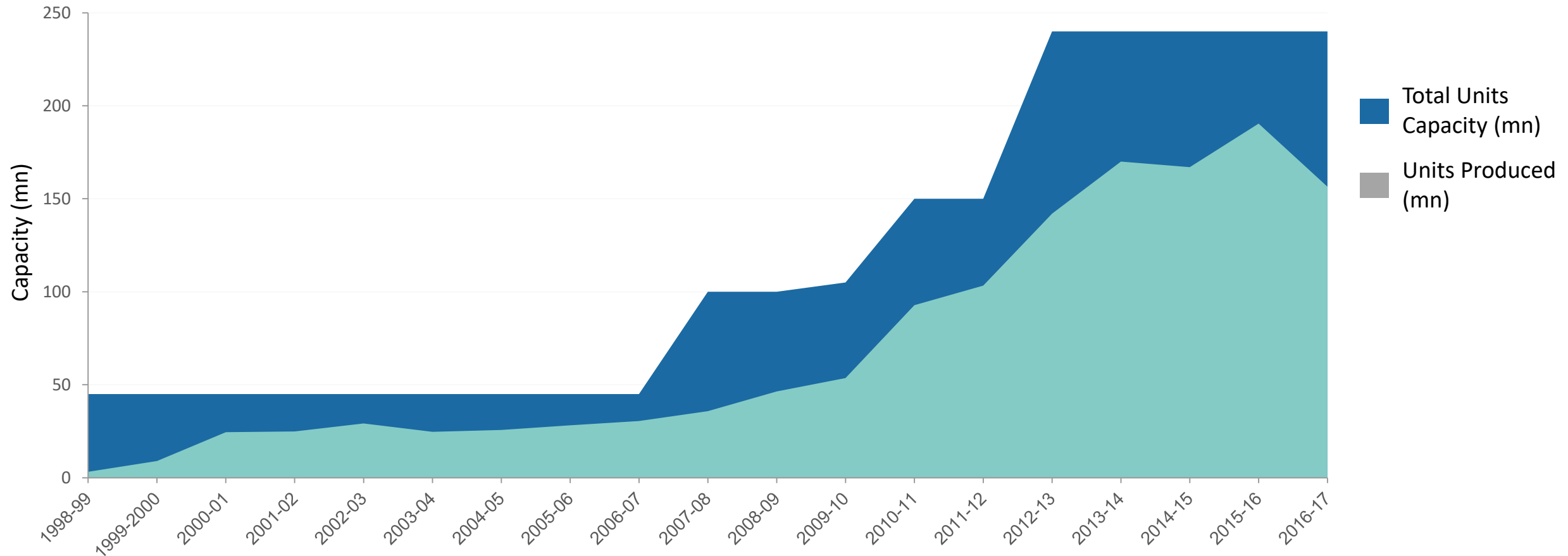




OUR OPERATIONAL EXCELLENCE



The Growth Momentum



From 3.2 million to 156.5 million units



Production Facility

8

Bulk Manufacturing Lines

Non- Sterile Creams, Gels,
Ointments & Lotions

Classified Areas for Steroidal,
Non-Steroidal & Cosmetic Products

17

Filling & Packing Lines

Aluminum, Plastic & Laminated
Tubes, HDPE / PP Bottles, Pump
Pack Bottles, Dispensing Systems,
Sachets

Classified Areas for Steroidal, Non-
Steroidal & Cosmetic Products



Production Capacity

8

Bulk Manufacturing Lines

Total Capacity: 9000 tons
Utilized Capacity: 4863 tons

17

Filling & Packing Lines

Total Capacity: 300 mn
Utilized Capacity: 156.48 mn



Type	No.	Subtype	Capacity
Drug	Mfg I	Steroidal	1000kg
	Mfg VI		1000kg
	Mfg II	Non-steroidal	1000kg
	Mfg III		1000kg
	Mfg IV		2000kg
	Mfg V		2000kg
	Alcohol Based		350kg
Cosmetic		3000kg	
Pilot Plant		100 kg + 200kg	

Manufacturing



Packaging

Type	Filling	Packing Line	Type	Capacity
Steroidal	I	Line I	Norden Tube	100 tpm
		Line II	Norden Tube	100 tpm
	VI	Line X	Norden Tube	100 tpm
		Line XI	Norden Tube	170 tpm
Non Steroidal	II	Line III	HDTF-2 Tube / Bottle	68 tpm / 30 bpm
		Line IV	Norden Tube	100 tpm
	III	Line V	Norden Tube	100 tpm
	V	Line VIII	Bottle	60 bpm
		Line IX	Norden Tube	100 tpm
	IV	Line VII	Norden Tube	170 tpm
Cosmetic		Line XIII	Jars	15 jpm
		Line XIV	Bosch Bottle	60 bpm
		Line XV	Norden Tube	100 tpm
		Line XVI	Bottle	30 bpm
		Line XVII	Sachet	150 spm
Exhibit Batches		Line VI	Norden Tube	100 tpm
Proposed HPAF		Line XVIII	Norden Tube	100 tpm



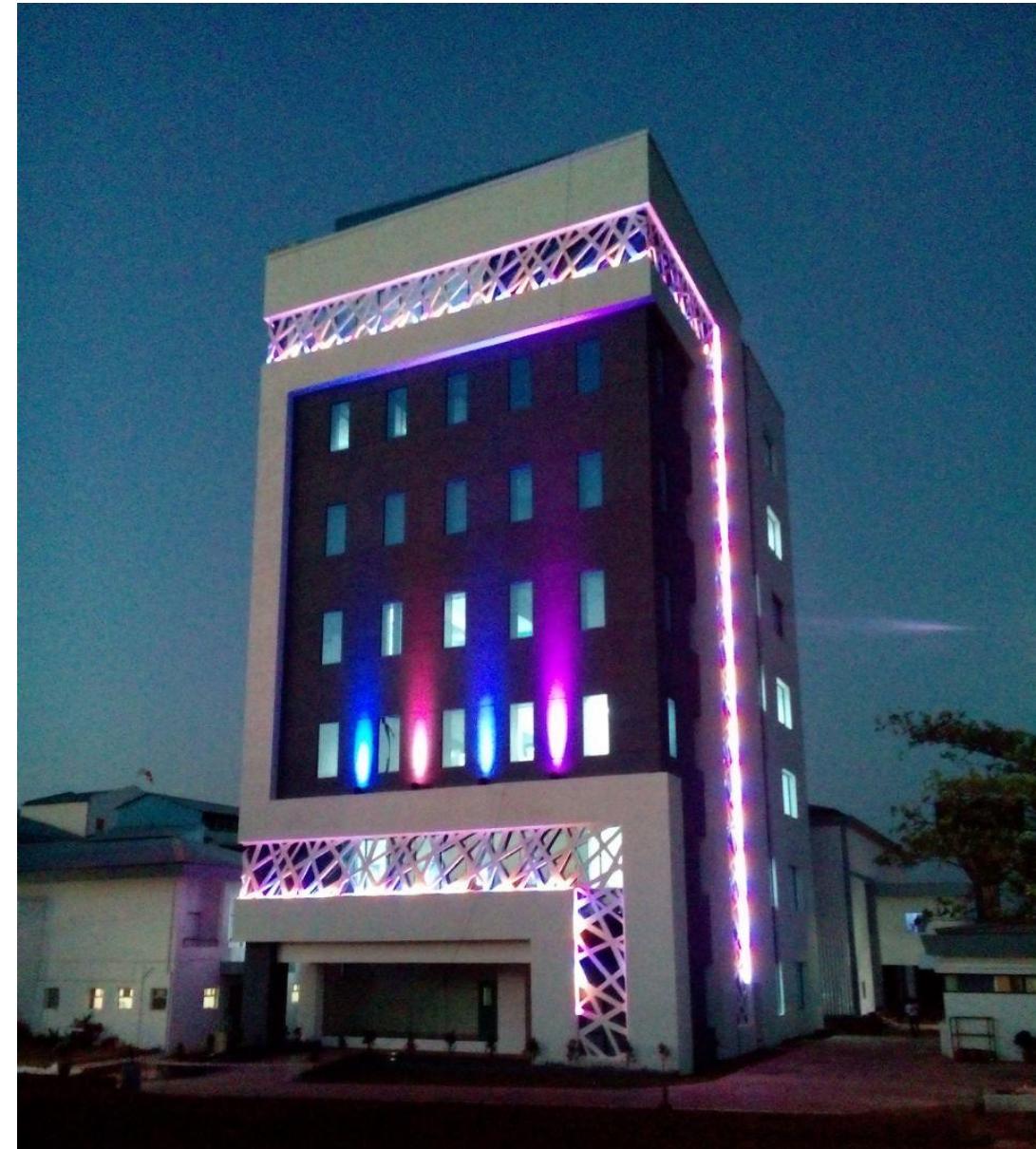


- All transactions through SAP
- Totally 14,000 Temperature Controlled Warehouse pallets
- 5,000 Temperature Controlled ASRS Warehouse pallets
- Warehouse Management System for Location Management
- All Input material Barcoded for Track & Trace and status
- FIFO / FEFO followed for Dispensing

Warehouse

Quality Control

Online Sampling & FTNIR for identification
Wet Chemistry laboratory, Instrumentation section
In-house Microbiology Lab
Packaging material testing Lab
Stability study as per ICH guidelines
Caliber® LIMS
Empower® 3 networking for HPLC and GC
Anton Paar® Rheometer for benchmarking studies.



Formulation Lab

3600 sq ft
15 members team



Analytical Lab

1800 sq ft
25 members team

Enriched experience of working on several ANDAs and dossiers

Potential to work on 10+ new ANDAs annually

ISO class 8 Pilot Area for trial batch manufacturing

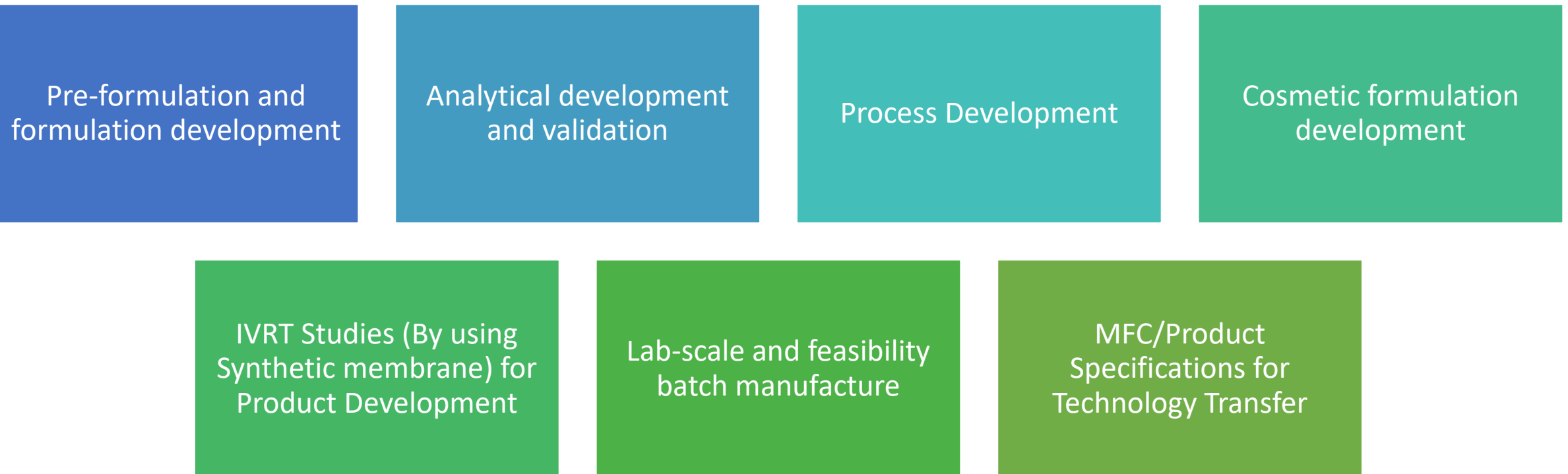
Automated IVRT apparatus for faster and error-free results

All HPLCs are linked to Empower 3 software for reliable data generation.



Research & Development

R&D - Services



Health, Safety & Environment

Successfully cleared
many audits and
inspections with
respect to HSE / CSR

Encube is a
Zero Discharge
Plant



**First IGBC-LEED certified
Platinum rated building of Goa**



Commissioned Green Office Building



OUR ACCOLADES



US FDA GMP Certification

Russian GMP

TGA Australia GMP

Ukraine Site Approval

WHO-GMP Certification

Mar 2012 / Aug 2015

Oct 2017

July 2017

May 2017

Aug 2016



Taiwan FDA

ANSM EU GMP

UAE Mfg Site Approval

ANVISA GMP

South Korean FDA

Oct 2014

Aug 2014

Aug 2013

May 2013

June 2012



US FDA GMP Certification

ANSM EU GMP

ANVISA GMP

Russian GMP

TGA Australia GMP

Mar 2012 / Aug 2015

Nov 2014

Nov 2017

Oct 2017

July 2017



Ukraine Site Approval

WHO-GMP Certification

Taiwan FDA

UAE Mfg Site Approval

South Korean FDA

May 2017

Aug 2016

Oct 2014

Aug 2013

June 2012

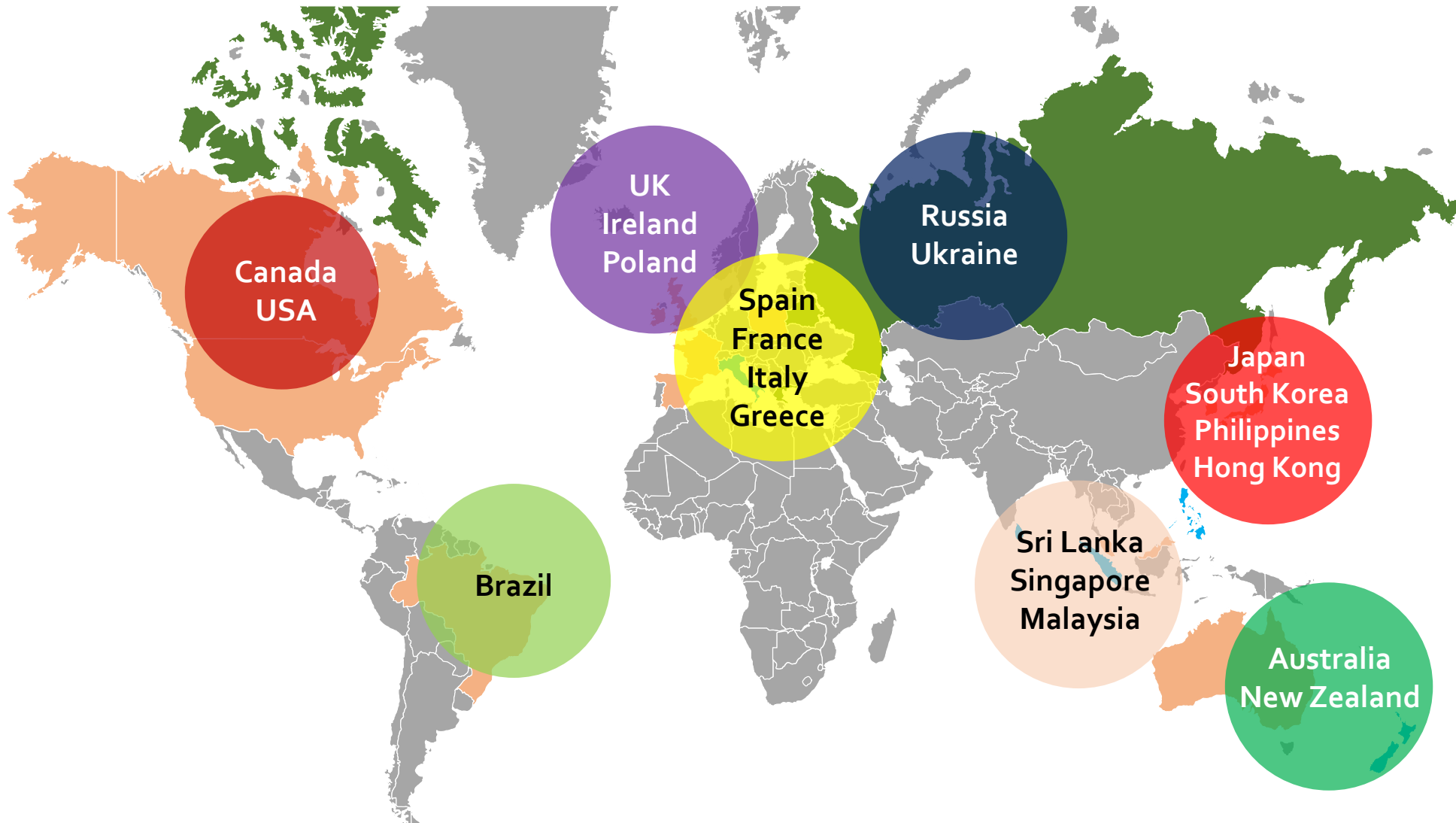


Awards and Accreditations

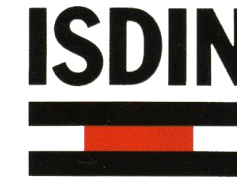
Achievement	Month/Year
Best Contract Manufacturer India – OPPI	Sep 2015
IDMA - Quality Excellence Award (Gold)	Jan 2015
ISO 14001:2004 Certification	Dec 2014
LEED India Certification for New Construction (Platinum)	Sep 2014
C-TPAT	May 2014
ISO 9001: 2008 Certification	Mar 2013
Best Contract Manufacturer India – OPPI	Sep 2011
Star Export House Status	Jan 2011
SAP ACE 2007 Award	Aug 2007



Our Global Reach



Potential to export anywhere in the world.



Our Esteemed Customers



Get in touch!



+91-22-6228-8000



www.encubeethicals.com



connect@encubeethicals.com



803, HDIL Kaledonia,
Sahar Road, Andheri East,
Mumbai -69 – INDIA.







TUBE FILLING STATION

WARNING
REMAINING
PRESSURE

TUBE ORIENTATION STATION

TUBE CLEANING STATION

WARNING
HOT
AREA



Protective Ointment
Onguent protecteur
PO
Protects chafed skin and temporarily helps relieve minor skin irritation due to dermatitis associated with incontinence. Apply ointment to affected areas and reapply as needed. For external use only. Do not use for more than 7 days. For use on children, consult your physician. Contains petrolatum, zinc oxide, and other ingredients. See full prescribing information for complete details.

Protective Ointment
Onguent protecteur
PO
Protects chafed skin and temporarily helps relieve minor skin irritation due to dermatitis associated with incontinence. Apply ointment to affected areas and reapply as needed. For external use only. Do not use for more than 7 days. For use on children, consult your physician. Contains petrolatum, zinc oxide, and other ingredients. See full prescribing information for complete details.

Protective Ointment
Onguent protecteur
PO
Protects chafed skin and temporarily helps relieve minor skin irritation due to dermatitis associated with incontinence. Apply ointment to affected areas and reapply as needed. For external use only. Do not use for more than 7 days. For use on children, consult your physician. Contains petrolatum, zinc oxide, and other ingredients. See full prescribing information for complete details.

Protective Ointment
Onguent protecteur
PO
Protects chafed skin and temporarily helps relieve minor skin irritation due to dermatitis associated with incontinence. Apply ointment to affected areas and reapply as needed. For external use only. Do not use for more than 7 days. For use on children, consult your physician. Contains petrolatum, zinc oxide, and other ingredients. See full prescribing information for complete details.

Protective Ointment
Onguent protecteur
PO
Protects chafed skin and temporarily helps relieve minor skin irritation due to dermatitis associated with incontinence. Apply ointment to affected areas and reapply as needed. For external use only. Do not use for more than 7 days. For use on children, consult your physician. Contains petrolatum, zinc oxide, and other ingredients. See full prescribing information for complete details.

Protective Ointment
Onguent protecteur
PO
Protects chafed skin and temporarily helps relieve minor skin irritation due to dermatitis associated with incontinence. Apply ointment to affected areas and reapply as needed. For external use only. Do not use for more than 7 days. For use on children, consult your physician. Contains petrolatum, zinc oxide, and other ingredients. See full prescribing information for complete details.

Protective Ointment
Onguent protecteur
PO
Protects chafed skin and temporarily helps relieve minor skin irritation due to dermatitis associated with incontinence. Apply ointment to affected areas and reapply as needed. For external use only. Do not use for more than 7 days. For use on children, consult your physician. Contains petrolatum, zinc oxide, and other ingredients. See full prescribing information for complete details.

Protective Ointment
Onguent protecteur
PO
Protects chafed skin and temporarily helps relieve minor skin irritation due to dermatitis associated with incontinence. Apply ointment to affected areas and reapply as needed. For external use only. Do not use for more than 7 days. For use on children, consult your physician. Contains petrolatum, zinc oxide, and other ingredients. See full prescribing information for complete details.











E-13

HPLC SPARES





Thank you!